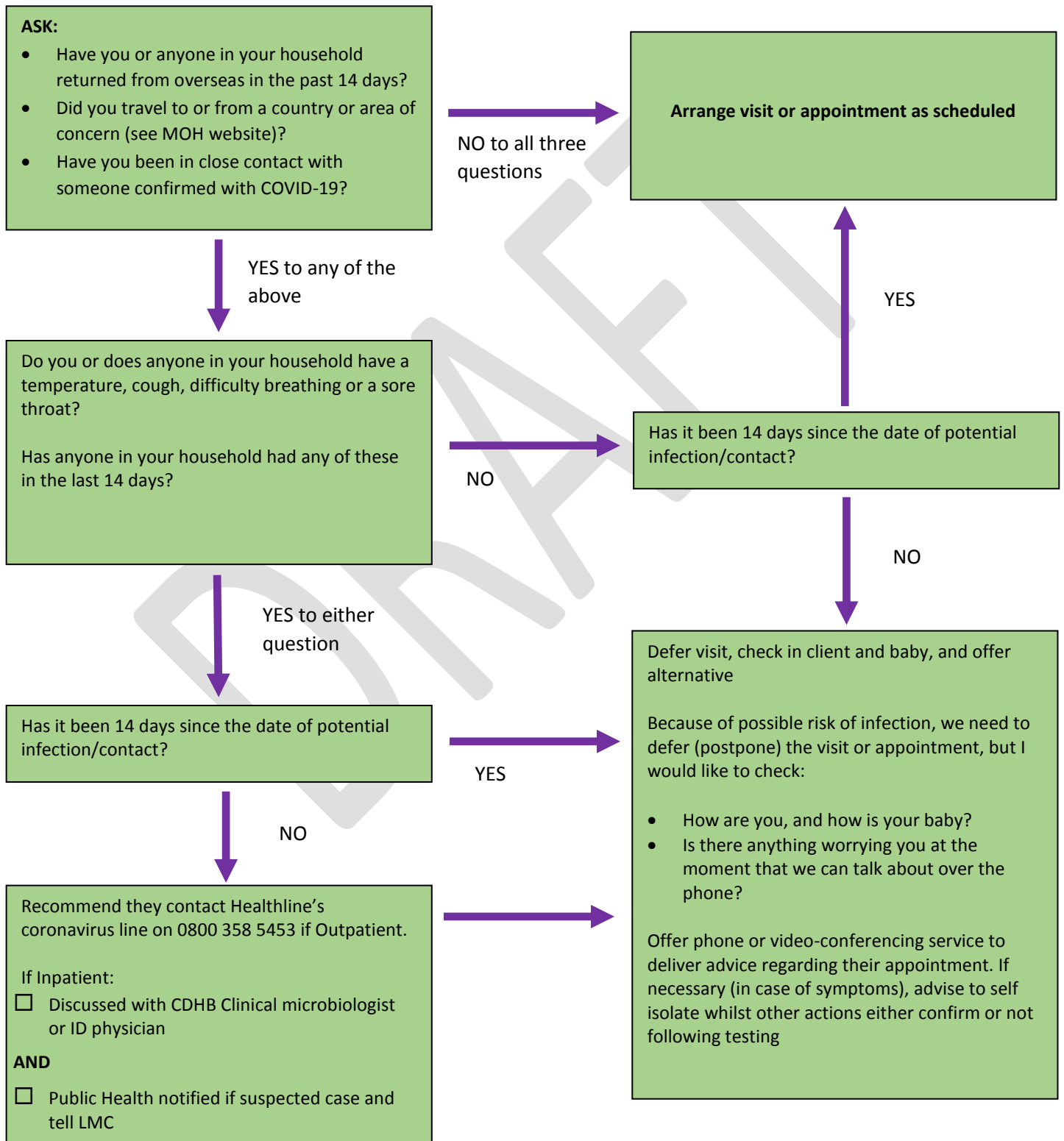


(Attach label here)

NAME: \_\_\_\_\_ NHI: \_\_\_\_\_  
 GENDER: \_\_\_\_\_ DOB: \_\_\_\_\_ AGE: \_\_\_\_\_

**Suspect COVID-19 Case Risk Assessment – Wear a mask and place a mask also on the woman and anyone attending with her. Hopefully she has called ahead or this is being used for phone triage so we are ready to meet her or defer her appointment.**



**Action:**

- Discussed with CDHB Clinical microbiologist or ID physician
- COVID-19 Screen
- Public Health notified if suspected case

**Comments:**

**\*\* Close** contact is defined as:

- Direct contact with the case or their bodily fluids or their laboratory specimens, or in the same room of a health care setting when an aerosol generating procedure is undertaken on the case, without appropriate personal protective equipment (PPE).
- Living in the same household or household-like setting (e.g. in a hostel) as a COVID-19 patient.
- A person who spent two hours or longer in the same room (such as a general practice or EXD waiting room).
- Those seated within two rows either side of a symptomatic case on a flight, bus or train for two hours or longer.
- Face-to-face contact for more than 15 minutes with the case in any other setting not listed above.

The epidemiological link may have occurred within a 14-day period before or after symptomatic illness in the case under consideration.